

## Handling and Installation Instructions

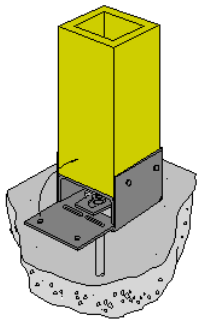
USA February 2009

### Storage and Handling

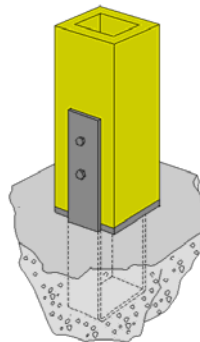
- Place the first set of wood strips on a level dry surface. Material should be supported 4" above the ground to allow for free air movement and to prevent contact with ground moisture.
- Space wood strips a maximum of 6' apart. Stack wood strips directly above one another. Maximum storage height of 10' is recommended.
- All post ends are factory sealed to prevent water damage. Trimmed material will require end sealing with an alkyd-oil primer or equivalent.
- Material wrap is slippery when wet or frozen, to prevent injury do not allow workers to walk on bundles.
- Store all products wrapped in the original wrapping.
- Do not re-wrap wet material.

### Installation

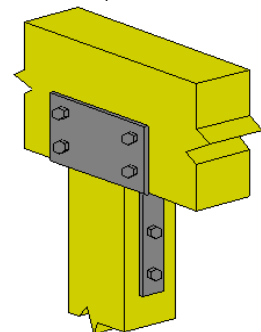
Raised Base Connection



Column Base Connection



Column Cap Connection



- QuattroPost is intended for axial loading only.
- Column bases and Column caps are required when the column has been designed for use in an uplift application. Simpson Strong Tie products or equal are to be used. Refer to the hardware manufacturers instructions for capacities and connector attachment.
- For vertical load only applications a nailed connection can be implemented. Toe-nail the column to the supporting structure as follows:
  - 4x4 and 6x6 Columns 1-8d x 2½" nail per column face for a total of 4 nails at the bottom and 4 nails at the top.
  - 8x8 Columns 2-8d x 2½" nails per column face for a total of 8 nails at the bottom and 8 nails at the top.
- Where the column is in close contact with the foundation or soil a column base is to be used to raise the column a minimum of 1" above the foundation or 6" above the soil.
- It is recommended that all connector holes be pre-drilled.
- Through-bolting is not permitted on structural connections on QuattroPost. Pilot holes are required for lag screws, and the Maximum permitted lag screw diameter is ½".
- Nail and screw applications are subject to the specifications published in NDS 2005 for the applicable wood species used in QuattroPost, as referenced in the 2006 International Building Code.
- Notching of load bearing QuattroPost is permitted only with prior approval from Synergy Pacific.
- QuattroPost is intended for use in dry service conditions. These are conditions where the equilibrium moisture content of the wood is less than 16%. QuattroPost products used in exterior construction in protected or semi-protected locations such as under roof or porch canopies or overhangs, or in locations where it is wet for short periods of time will typically have a equilibrium moisture content of not more than 16% and may be used.
- QuattroPost products are manufactured with Western Red Cedar and Douglas-fir (Fir-Larch).
- Hole sizes shall be limited to ¾" diameter for 6x6 and 8x8 posts. Holes shall be centered on the post and spaced vertically at least 8" apart for multiple holes. Holes in addition to those required for Installation of approved column caps and bases are not permitted within 8" of the top or bottom of the post.
- To ensure lasting durability and to prevent moisture damage QuattroPost is to be stained or primed with an exterior alkyd-oil primer and then top-coated with a 100% acrylic latex exterior coating. Where a clear finish is desired an exterior grade polyurethane product shall be used.
- Trimming to length on site is permitted. The trimmed end shall be re-sealed prior to installation. Ensure all cuts are square and straight.
- It is the responsibility of the building designer to ensure that all building codes and local jurisdiction requirements are met.
- Contact Synergy Pacific for all other inquiries.

Proudly manufactured by

 **SynergyPacific**  
Maximizing Value